

# ENCLAVE

EAST PERTH

PARK | RIVER | CITY

## TYPE

# A1

### Details

Aspect	South
Beds	1
Baths	1
Car Bays	1
Car Bays (201, 301, 401)	SB
Store Room	1

### Apartments (shown)

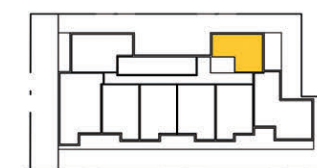
201, 301, 401, 501,  
601, 701, 801

Levels	2-8
Total Living Area	57m <sup>2</sup>

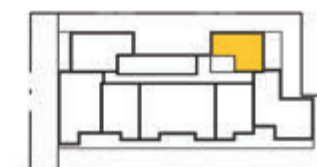
### General Notes:

- Variations from Strata Plan may apply.
- Furniture is indicative.
- Shape and configuration of balconies, doors, windows, condensers, screens and ducts may differ from those illustrated.
- Areas of apartment given are based on architectural measurements. This varies from strata area as it is a different method of measuring the apartment.

Last updated 28/7/2017



Level 2-4



Level 5-8



Note: Plans not to scale

# ENCLAVE

EAST PERTH

PARK | RIVER | CITY

## TYPE

# A1a

### Details

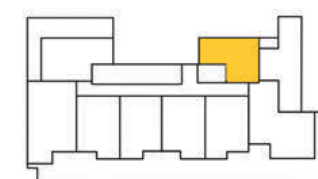
Aspect	South
Beds	1
Baths	1
Car Bays	1
Store Room	1

<b>Apartment (shown)</b>	<b>101</b>
Level	1
<b>Total Living Area</b>	<b>99m<sup>2</sup></b>

### General Notes:

- Variations from Strata Plan may apply.
- Furniture is indicative.
- Shape and configuration of balconies, doors, windows, condensers, screens and ducts may differ from those illustrated.
- Areas of apartment given are based on architectural measurements. This varies from strata area as it is a different method of measuring the apartment.

Last updated 28/7/2017



Note: Plans not to scale

ENCLAVE

EAST PERTH

PARK | RIVER | CITY

TYPE

A2a

Details	
Aspect	West
Beds	1
Baths	1
Car Bays	1
Store Room	1
Apartments (shown)	
203, 204, 205, 303, 304, 305, 403, 404, 405, 503, 603, 703, 803	
Levels	2-8
Total Living Area	65m <sup>2</sup>

- General Notes:
- Variations from Strata Plan may apply.
  - Furniture is indicative.
  - Shape and configuration of balconies, doors, windows, condensers, screens and ducts may differ from those illustrated.
  - Areas of apartment given are based on architectural measurements. This varies from strata area as it is a different method of measuring the apartment.

Last updated 28/7/2017



Level 2-4



Level 5-8



Note: Plans not to scale

# ENCLAVE

EAST PERTH

PARK | RIVER | CITY

## TYPE A3

### Details

Aspect	North
Beds	1
Baths	1
Car Bays	1
Store Room	1

### Apartments (shown)

208, 308, 408, 507, 607,  
707, 807

Levels	2-8
Total Living Area	71m <sup>2</sup>

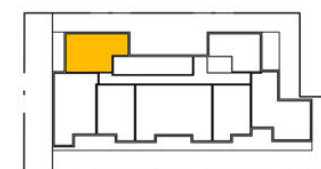
### General Notes:

- Variations from Strata Plan may apply.
- Furniture is indicative.
- Shape and configuration of balconies, doors, windows, condensers, screens and ducts may differ from those illustrated.
- Areas of apartment given are based on architectural measurements. This varies from strata area as it is a different method of measuring the apartment.

Last updated 28/7/2017



Level 2-4



Level 5-8



Note: Plans not to scale



# ENCLAVE

EAST PERTH

PARK | RIVER | CITY

## TYPE B2

### Details

Aspect	West
Beds	2
Baths	2
Car Bays	1
Store Room	1

### Apartments (shown)

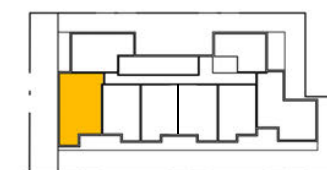
207, 307, 407, 506, 606,  
706, 806

Levels	2-8
Total Living Area	86m <sup>2</sup>

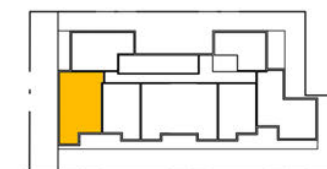
### General Notes:

- Variations from Strata Plan may apply.
- Furniture is indicative.
- Shape and configuration of balconies, doors, windows, condensers, screens and ducts may differ from those illustrated.
- Areas of apartment given are based on architectural measurements. This varies from strata area as it is a different method of measuring the apartment.

Last updated 28/7/2017



Level 2-4



Level 5-8



Note: Plans not to scale

# ENCLAVE

EAST PERTH

PARK | RIVER | CITY

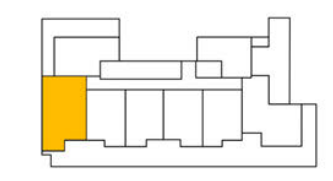
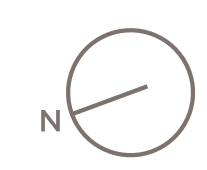
## TYPE

# B2a

Details	
Aspect	West
Beds	2
Baths	2
Car Bays	1
Store Room	1
Apartment	
Level	107
Total Living Area	97m <sup>2</sup>

- General Notes:**
- Variations from Strata Plan may apply.
  - Furniture is indicative.
  - Shape and configuration of balconies, doors, windows, condensers, screens and ducts may differ from those illustrated.
  - Areas of apartment given are based on architectural measurements. This varies from strata area as it is a different method of measuring the apartment.

Last updated 28/7/2017



Note: Plans not to scale

# ENCLAVE

EAST PERTH

PARK | RIVER | CITY

## TYPE B3

### Details

Aspect	West
Beds	2
Baths	2
Car Bays	1 or 2
Store Room	1

### Apartments (shown)

202, 302, 402, 502,  
602, 702, 802

Levels	2-8
<b>Total Living Area</b>	<b>96m<sup>2</sup></b>

### General Notes:

- Variations from Strata Plan may apply.
- Furniture is indicative.
- Shape and configuration of balconies, doors, windows, condensers, screens and ducts may differ from those illustrated.
- Areas of apartment given are based on architectural measurements. This varies from strata area as it is a different method of measuring the apartment.

Last updated 28/7/2017



Note: Plans not to scale

# ENCLAVE

EAST PERTH

PARK | RIVER | CITY

TYPE

## B3a

### Details

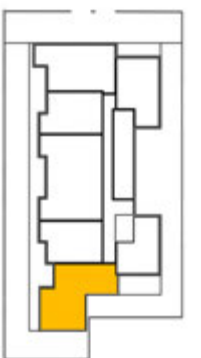
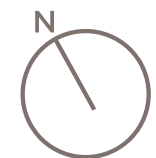
Aspect	West
Beds	2
Baths	2
Car Bays	1 or 2
Store Room	1

<b>Apartment</b>	<b>102</b>
Level	1
<b>Total Living Area</b>	<b>141m<sup>2</sup></b>

### General Notes:

- Variations from Strata Plan may apply.
- Furniture is indicative.
- Shape and configuration of balconies, doors, windows, condensers, screens and ducts may differ from those illustrated.
- Areas of apartment given are based on architectural measurements. This varies from strata area as it is a different method of measuring the apartment.

Last updated 28/7/2017



Note: Plans not to scale



# ENCLAVE

EAST PERTH

PARK | RIVER | CITY

TYPE

B4

## Details

Aspect	North
Beds	2
Baths	2
Car Bays	2
Store Room	1

## Apartments (shown)

1003, 1103

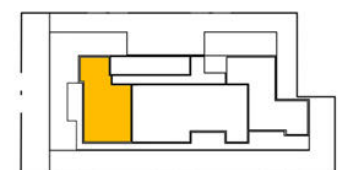
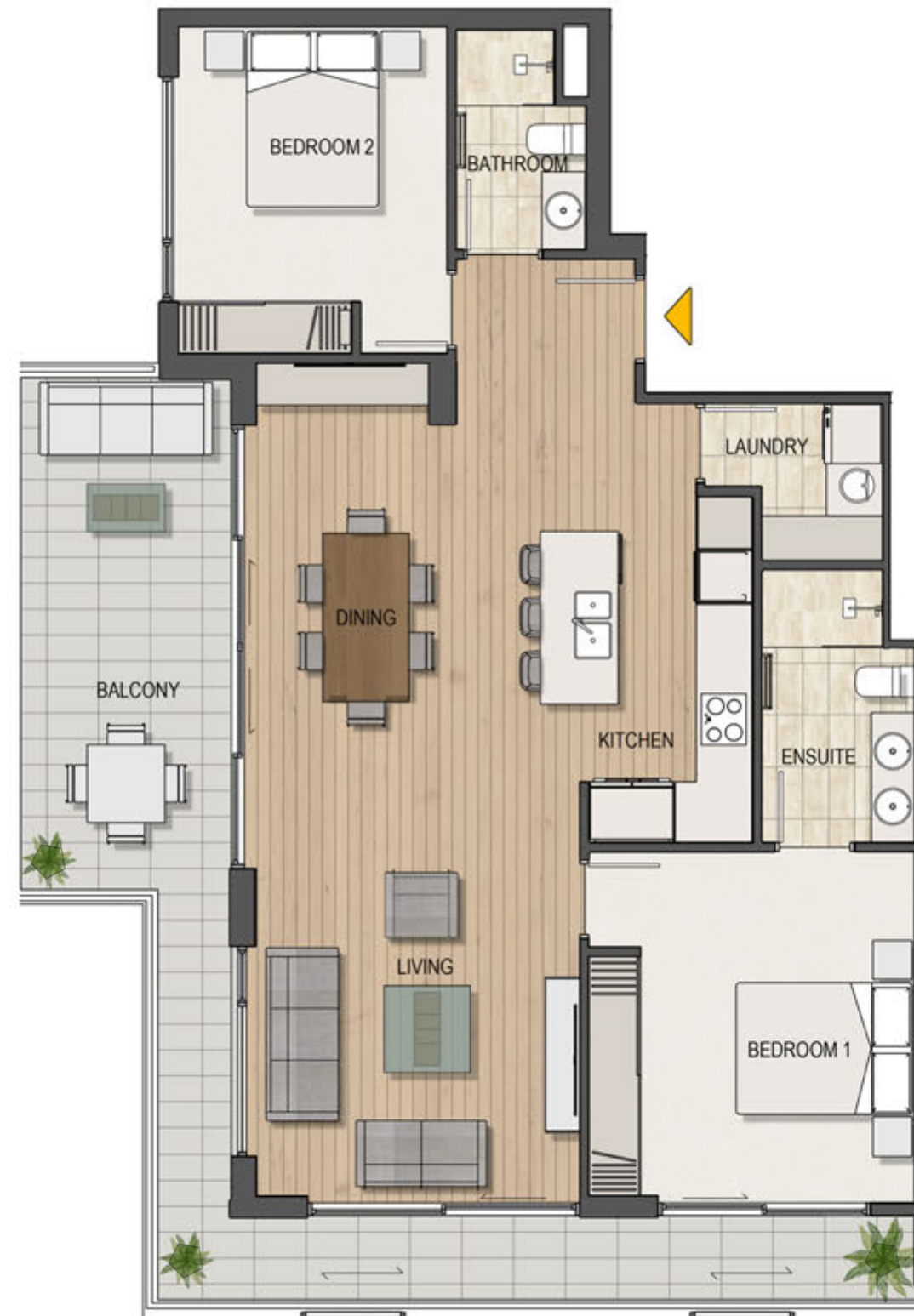
Levels 10, 11

Total Living Area 123m<sup>2</sup>

## General Notes:

- Variations from Strata Plan may apply.
- Furniture is indicative.
- Shape and configuration of balconies, doors, windows, condensers, screens and ducts may differ from those illustrated.
- Areas of apartment given are based on architectural measurements. This varies from strata area as it is a different method of measuring the apartment.

Last updated 28/7/2017



Note: Plans not to scale

# ENCLAVE

EAST PERTH

PARK | RIVER | CITY

## TYPE B4a

### Details

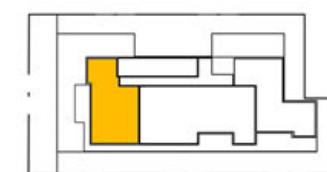
Aspect	North
Beds	2
Baths	2
Car Bays	2
Store Room	1

<b>Apartment</b>	<b>903</b>
Level	9
<b>Total Living Area</b>	<b>218m<sup>2</sup></b>

### General Notes:

- Variations from Strata Plan may apply.
- Furniture is indicative.
- Shape and configuration of balconies, doors, windows, condensers, screens and ducts may differ from those illustrated.
- Areas of apartment given are based on architectural measurements. This varies from strata area as it is a different method of measuring the apartment.

Last updated 28/7/2017



Note: Plans not to scale

# ENCLAVE

EAST PERTH

PARK | RIVER | CITY

## TYPE C1

### Details

Aspect	West
Beds	3
Baths	2
Car Bays	2
Store Room	1

### Apartments (shown)

902, 1002, 1102

Level 9, 10, 11

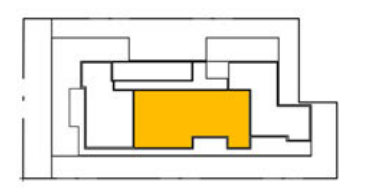
Total Living Area 195m<sup>2</sup>



### General Notes:

- Variations from Strata Plan may apply.
- Furniture is indicative.
- Shape and configuration of balconies, doors, windows, condensers, screens and ducts may differ from those illustrated.
- Areas of apartment given are based on architectural measurements. This varies from strata area as it is a different method of measuring the apartment.

Last updated 28/7/2017



Note: Plans not to scale



# ENCLAVE

EAST PERTH

PARK | RIVER | CITY

TYPE

C3

## Details

Aspect	West
Beds	2 + Study/Bed
Baths	2
Car Bays	2
Store Room	1

## Apartments (shown)

504, 604, 704, 804

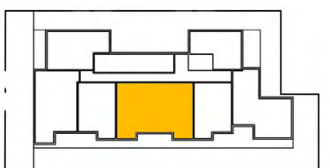
Levels 5-8

Total Living Area 129m<sup>2</sup>

## General Notes:

- Variations from Strata Plan may apply.
- Furniture is indicative.
- Shape and configuration of balconies, doors, windows, condensers, screens and ducts may differ from those illustrated.
- Areas of apartment given are based on architectural measurements. This varies from strata area as it is a different method of measuring the apartment.

Last updated 28/7/2017



Note: Plans not to scale